

ACCESSORIES



BESPOKE VEHICLE INTEGRATION KITS



UNIVERSAL ROOF MOUNTING KITS



MOUNTING KITS



REEDED LENSES



NEOPRENE COVERS



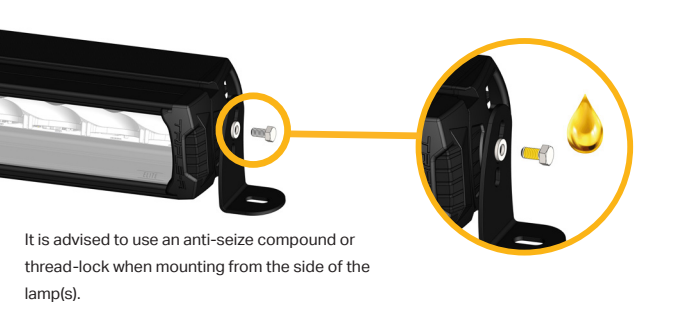
AMBER LENSES



WIRING KITS AND CANBUS SYSTEMS

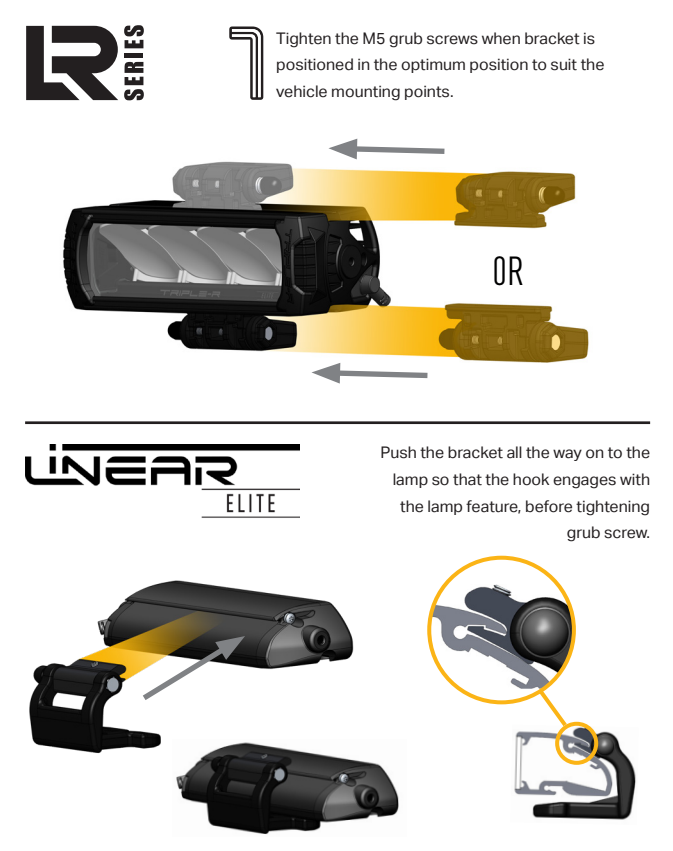
MOUNTING OPTIONS

SIDE MOUNTING



It is advised to use an anti-seize compound or thread-lock when mounting from the side of the lamp(s).

CENTRE MOUNTING



Tighten the M5 grub screws when bracket is positioned in the optimum position to suit the vehicle mounting points.

Push the bracket all the way on to the lamp so that the hook engages with the lamp feature, before tightening grub screw.

TRIPLE-R
HIGH PERFORMANCE LIGHTING

INSTRUCTIONS

TRIPLE-R
HIGH PERFORMANCE LIGHTING

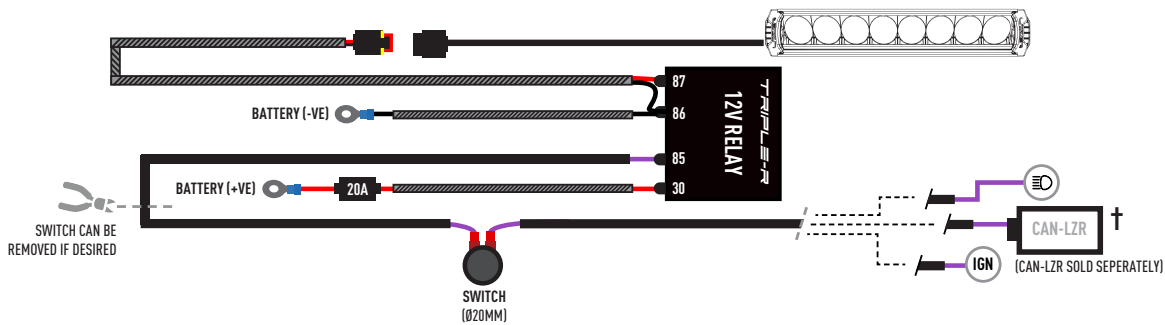
WWW.TRIPLE-R-LIGHTS.COM

sales@triple-r-lights.com
Triple-R Lights LLC, 16192 Coastal Highway,
Lewes, Delaware, 19958, USA

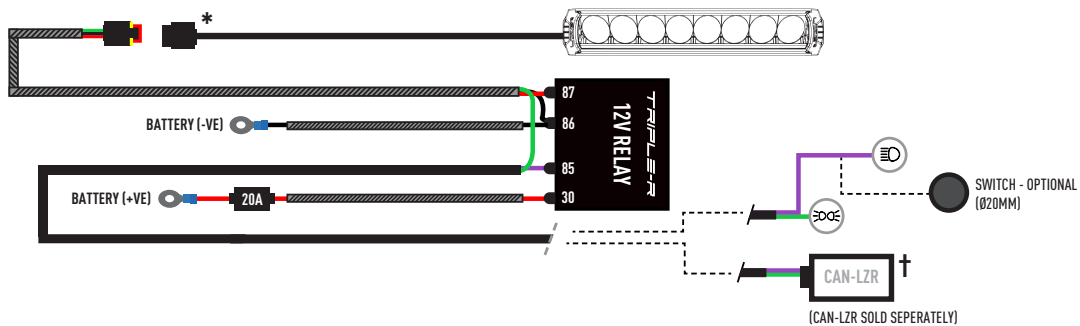
UK BUILT | US DRIVEN /TRIPLERLIGHTS

ELECTRICAL CONNECTION

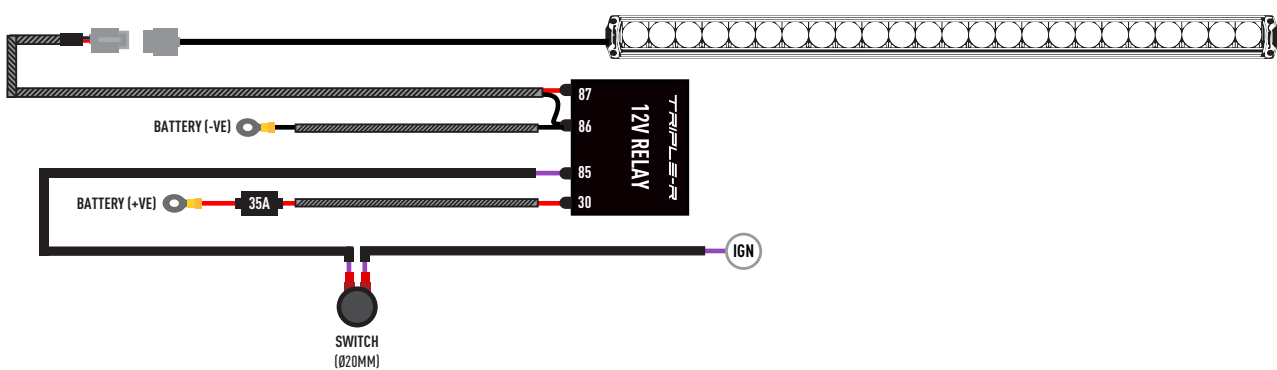
LOW POWER | FOR LR-750 ELITE, LR-850 ELITE & LR-1000 ELITE / LINEAR-6 ELITE / LINEAR-36, 42 & 48



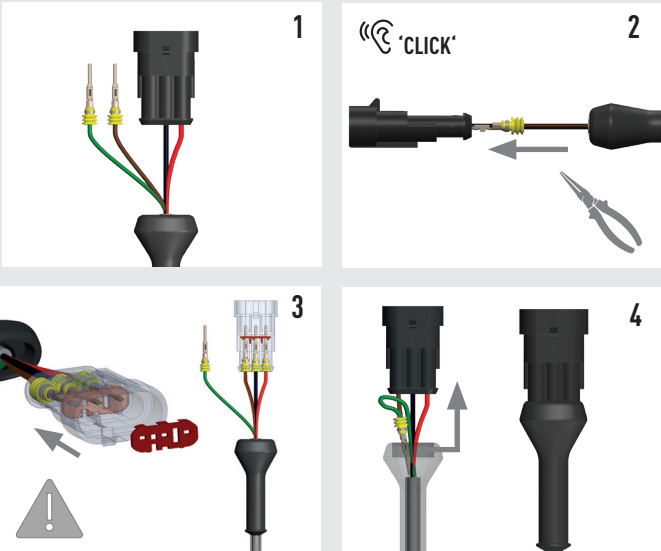
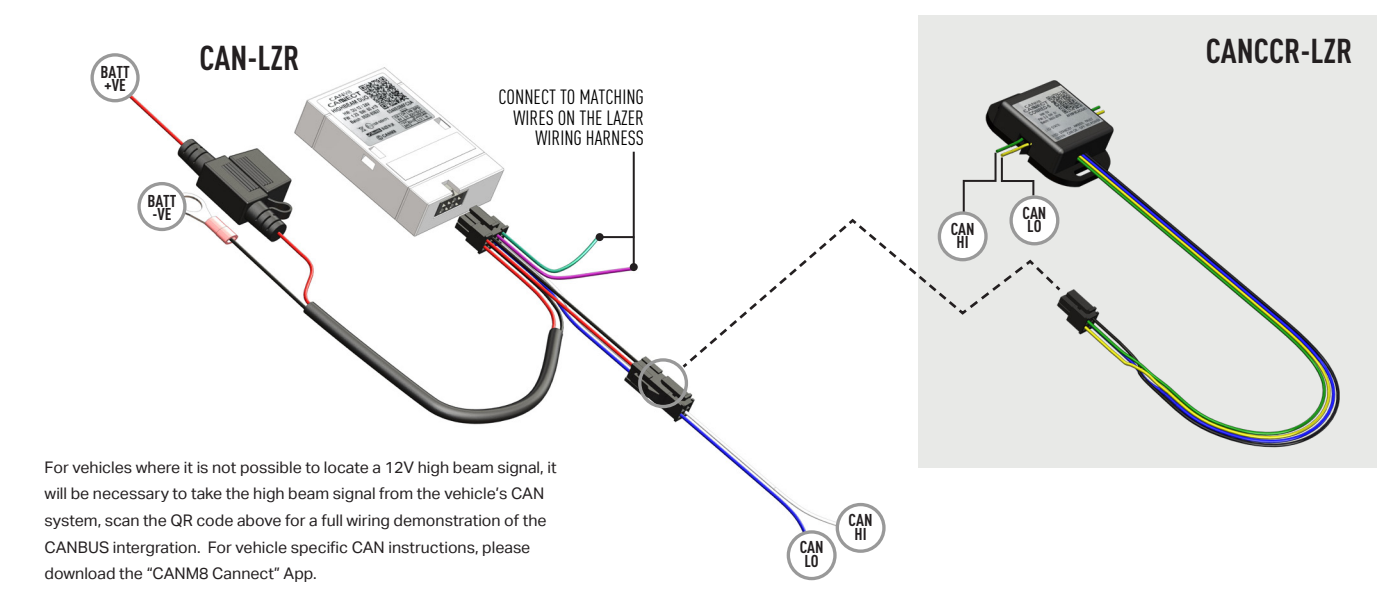
LOW POWER BACKLIGHT/DRL | FOR LR-750, LR-850, LR-1000 & LR-1250 / LINEAR-12 ELITE & LINEAR-18 ELITE



HIGH POWER | FOR LR-16, LR-24 & LR-28



† CANBUS INTEGRATION
(SOLD SEPERATELY)



* LR-SERIES - BACKLIGHT FUNCTION

The LR Series (Standard products only) come with the option to connect an amber or yellow backlight. For operation of either, connect the corresponding colored signal wire indicated below.

