

ACCESSORIES



BESPOKE VEHICLE INTEGRATION KITS



LAMP MOUNTING BRACKETS



UNIVERSAL MOUNTING KITS



DIFFUSER AND CLEAR LENSES



LENS COVERS



AMBER LENSES



WIRING KITS

WARRANTY INFORMATION

Your purchase of this Triple-R Lights product is an investment in a product designed and manufactured to the highest standards, but sometimes things can go wrong. You do not need to register your product with us, as we can trace the product through the unique serial number of the lamp.

In the unlikely event of having to make a claim, please retain your purchase receipt and pass it back to the retailer from where you first purchased the product, at the point of raising any issue.

We hope you enjoy your Triple-R Lights product, and wish you many years of a safer, more enjoyable night driving experience.

THANK YOU!

We appreciate your purchase of a Triple-R Lights product, and value your feedback. If you would like to leave feedback on your Lazer experience, please head to the relevant product page on our website www.triple-r-lights.com.

TRIPLE-R
HIGH PERFORMANCE LIGHTING

INSTRUCTIONS

TRIPLE-R
HIGH PERFORMANCE LIGHTING

WWW.TRIPLE-R-LIGHTS.COM

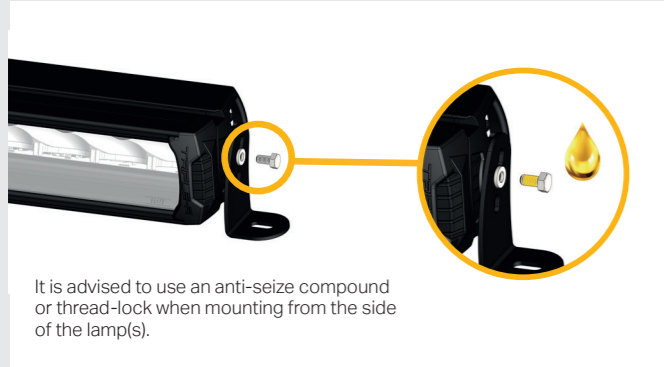
+1 520 468 2633
sales@triple-r-lights.com

Triple-R Lights LLC, 600 North Bullard Avenue, Suite 6
Goodyear, Arizona, 85338, USA

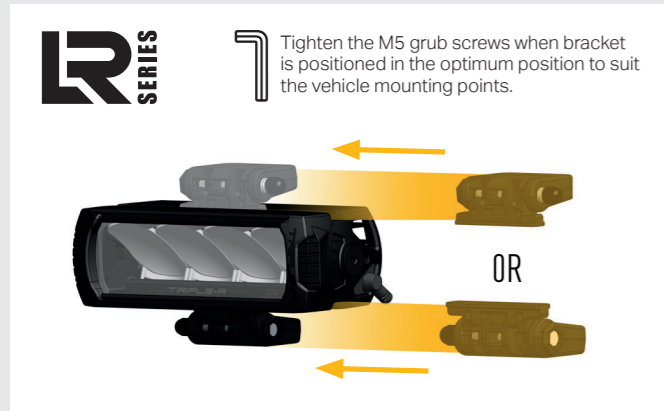
 UK BUILT | US DRIVEN    /TRIPLERLIGHTS

MOUNTING OPTIONS

SIDE MOUNTING



'CENTRE' MOUNTING



LINEAR ELITE

Push the bracket all the way on to the lamp so that the hook engages with the lamp feature, before tightening grub screw.



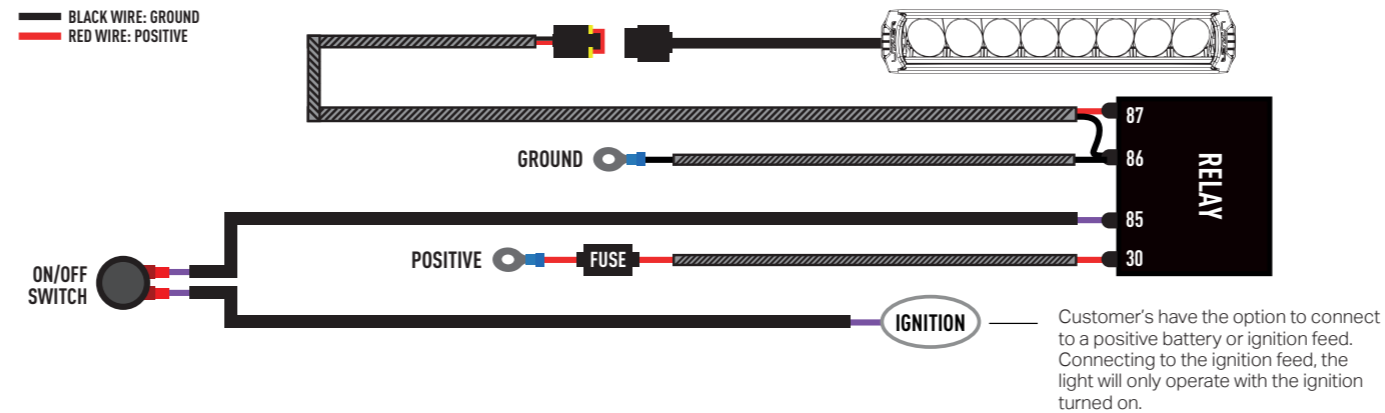
ELECTRICAL INFORMATION

IMPORTANT - Please disconnect the vehicle battery before installing or servicing your LED light installation. If in doubt, it is recommended to use the services of a professional installer.

It is recommended to use the available corresponding Triple-R wiring kit for your product. If utilizing existing (non Triple-R) wiring, make sure to use appropriate wire gauge and fusing in line with your lights technical specification.

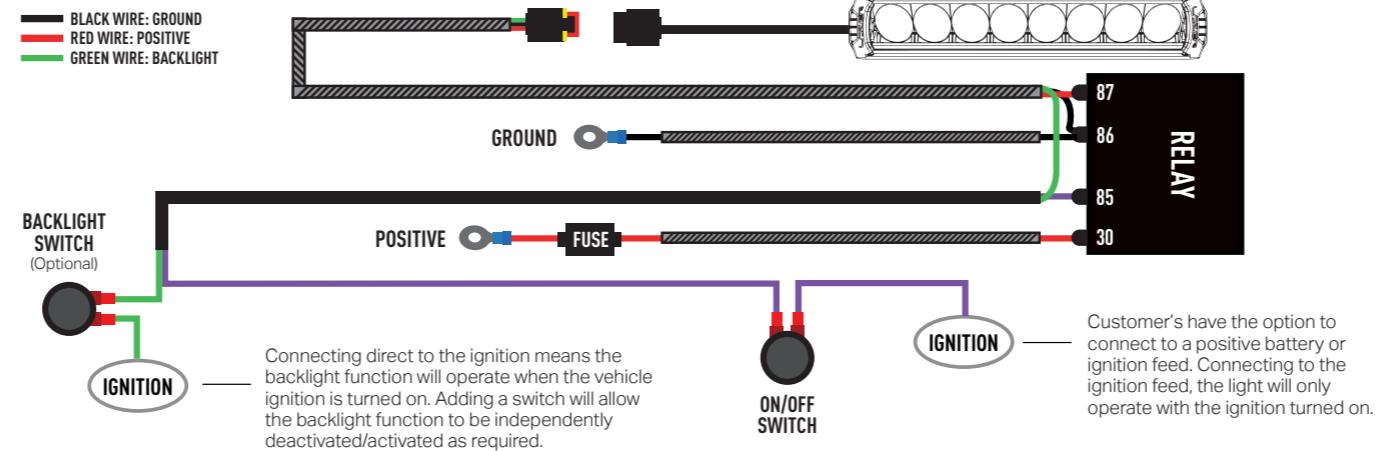
Please note: every Triple-R product is protected against moisture ingress. Your warranty stays in place even if the lamp connector is removed. For more details please see overleaf.

WITHOUT BACKLIGHT (2-PIN) | LR SERIES / LINEAR / SENTINEL / ST EVOLUTION / UTILITY SERIES



WITH BACKLIGHT (3-PIN) | LR SERIES / LINEAR / SENTINEL

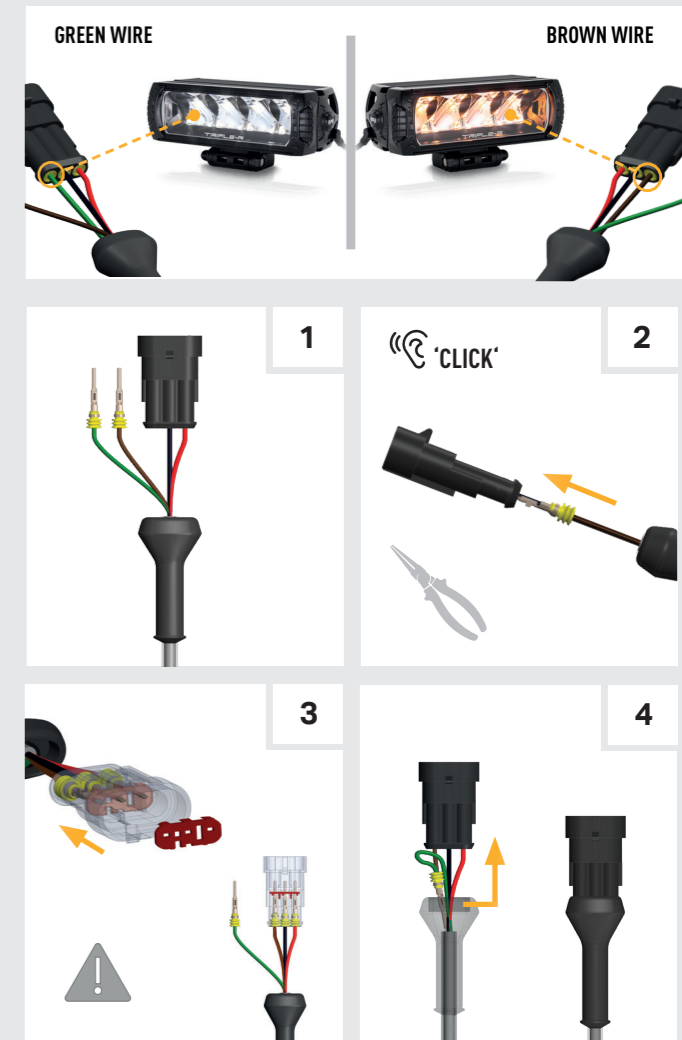
LR Series / Sentinel - See adjacent for additional wiring information for lamps that have integrated amber and white backlight function.



LR-SERIES/SENTINEL - BACKLIGHT FUNCTION

Many of the LR Series and Sentinel lamps come with the option to connect an amber or yellow backlight. For operation of either, connect the corresponding colored signal wire and pin, into the remaining vacant lamp connector terminal (as per illustrations below).

Green Wire = White Backlight
Brown Wire = Amber Backlight



For removal of contacts, please refer to product instructions online.